

# CHOKE COILS FOR PREVENT HARMONICS

## Features

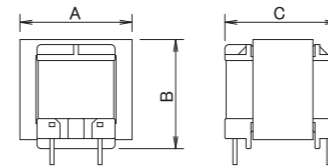
- Coil for a higher harmonic measure.
- Available to customized specification.
- \* Refer to our homepage for lineup products design.

高調波対策用コイルです。  
各種カスタム仕様に対応いたします。  
生産実績のラインナップをWEB上に記載しています。

### ■ CP



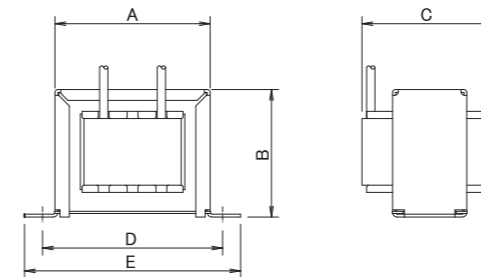
Model	A	B (Max)	C (Max)	L	
CP2815	28.5	29.0	30.0	15mH (1.0A)	60mH (0.5A)
CP3515	35.5	40.0	35.0	15mH (1.5A)	60mH (0.75A)
CP4119	41.5	36.5	39.0	10mH (2.2A)	40mH (1.1A)



### ■ CL



Model	A	B (Max)	C (Max)	D	E	L	
CL3510	54.0	32.0	37.0	46.0	54.0	15mH (0.8A)	60mH (0.4A)
CL4116	60.0	36.0	39.0	50.0	60.0	10mH (1.4A)	40mH (0.7A)
CL4118	60.0	38.5	40.0	50.0	60.0	10mH (1.6A)	40mH (0.8A)
CL4818	70.0	44.0	45.0	59.0	70.0	10mH (1.8A)	40mH (0.9A)
CL4825	70.0	44.0	50.0	60.0	70.0	10mH (2.6A)	40mH (1.3A)
CL5725	81.0	55.0	60.0	70.0	81.0	10mH (3.0A)	40mH (1.3A)



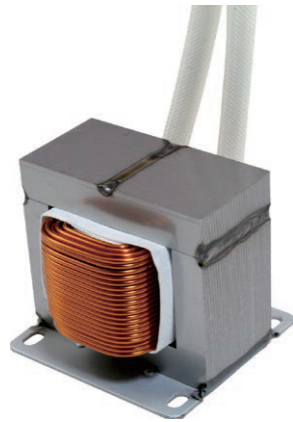
# REACTORS FOR LOW-FREQUENCY

## Features

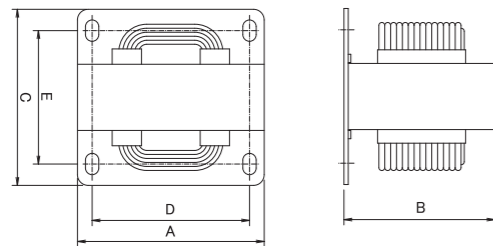
- Adaptable to low frequency.
- Able to meet low noise, high quality and low cost.
- Available to customize specification.
- \* The lineup produced in the past is posted on our homepage.

低騒音、高品質、低価格の低周波用リアクタです。  
各種カスタム設計に対応いたします。  
生産実績のラインナップをWEB上に記載しています。

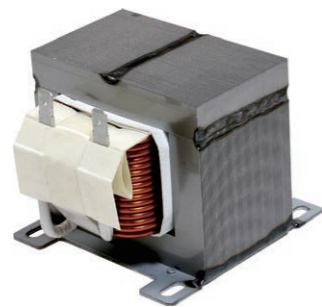
### GEI



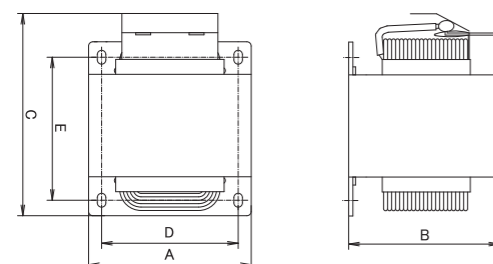
Model	A	B (Max)	C	D	E	L
GEI6625	76.2	58.0	80.0	64.0	64.0	5mH (8A)
GEI6635	76.2	58.0	80.0	64.0	64.0	5mH (9A)
GEI7023	70.0	64.0	66.0	59.0	50.0	5mH (10A)
GEI7032	70.0	64.0	66.0	59.0	50.0	5mH (12A)
GEI7645	76.2	68.0	80.0	64.0	64.0	5mH (14A)
GEI8530	87.0	76.0	80.0	72.0	63.0	5mH (13A)
GEI8550	87.0	76.0	80.0	72.0	63.0	5mH (18A)



### TEI



Model	A	B (Max)	C (Max)	D	E	L
TEI6635	76.2	58.0	100.0	64.0	64.0	5mH (9A)
TEI7032	70.0	64.0	95.0	59.0	50.0	5mH (12A)
TEI7645	76.2	68.0	105.0	64.0	64.0	5mH (14A)
TEI8530	87.0	76.0	100.0	72.0	63.0	5mH (13A)



Specifications are subject to change for improvement without notice.

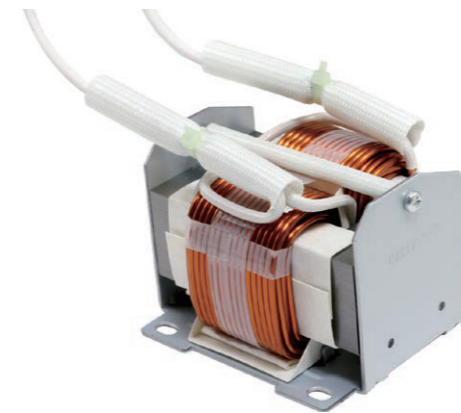
# REACTORS FOR HIGH-FREQUENCY

## Features

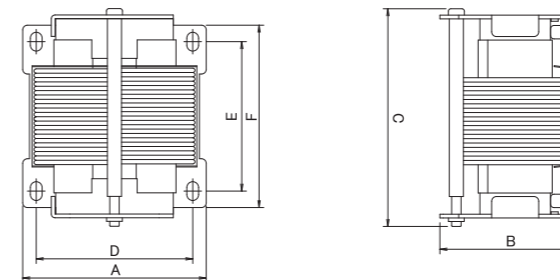
- Incorporate special iron core.
- Adaptable to high frequency.
- Able to meet low loss and low noise.
- Suitable for active filter, U.P.S. and inverter circuit etc.

特殊鉄芯を使用した高周波対応のリアクタです。  
低損失、低騒音タイプのリアクタです。  
アクティブフィルター、U.P.S. 各種インバータ回路に最適です。

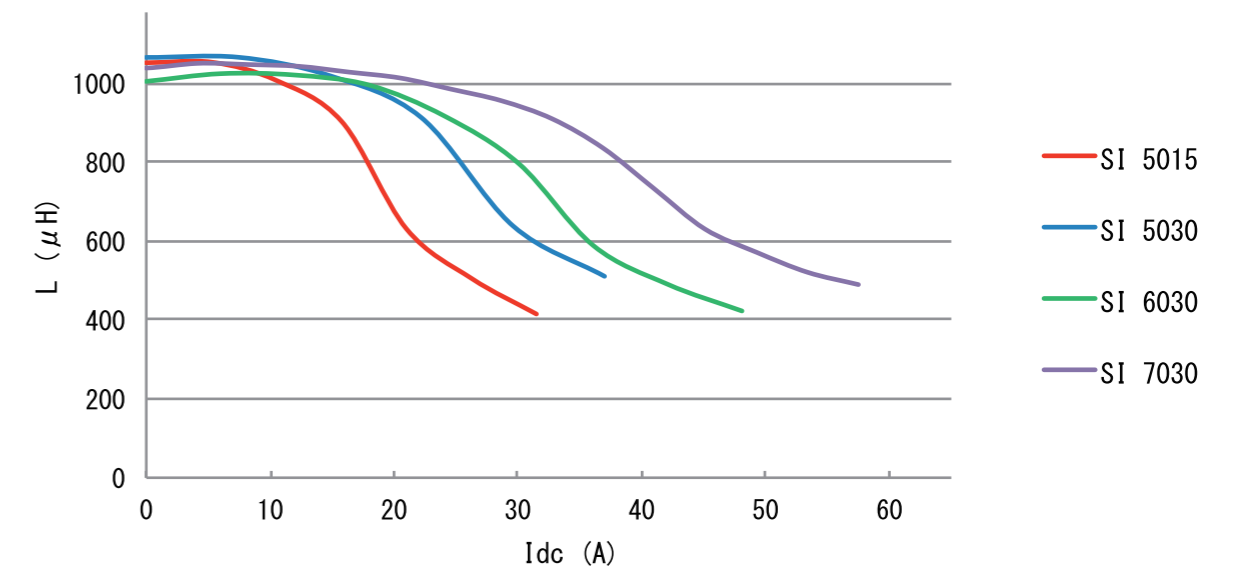
### SI



Model	A	B	C (Max)	D	E	F
SI5015	78.0	50.0	100.0	66.5	63.5	77.5
SI5020	78.0	55.0	100.0	66.5	63.5	77.5
SI5025	78.0	60.0	100.0	66.5	63.5	77.5
SI5030	78.0	65.0	100.0	66.5	63.5	77.5
SI6020	90.0	55.0	125.0	77.0	82.0	98.0
SI6030	90.0	65.0	125.0	77.0	82.0	98.0
SI7030	100.0	65.0	145.0	87.0	100.0	116.0



Direct current superposed characteristics at 10kHz



Specifications are subject to change for improvement without notice.

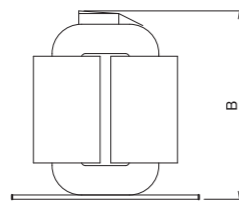
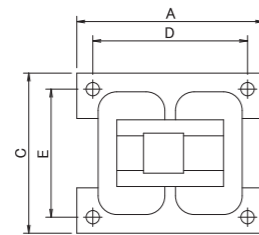
# HIGH CURRENT AND HIGH FREQUENCY REACTORS FOR PREVENT HARMONICS

## Features

- Incorporate amorphous core.
- Adaptable to high frequency.
- Applicable to high current up to 150A.
- Stable inductance.
- Excellent DC superposition characteristics.
- Able to meet low loss at high frequency because of low core loss.
- Available to customized specification.

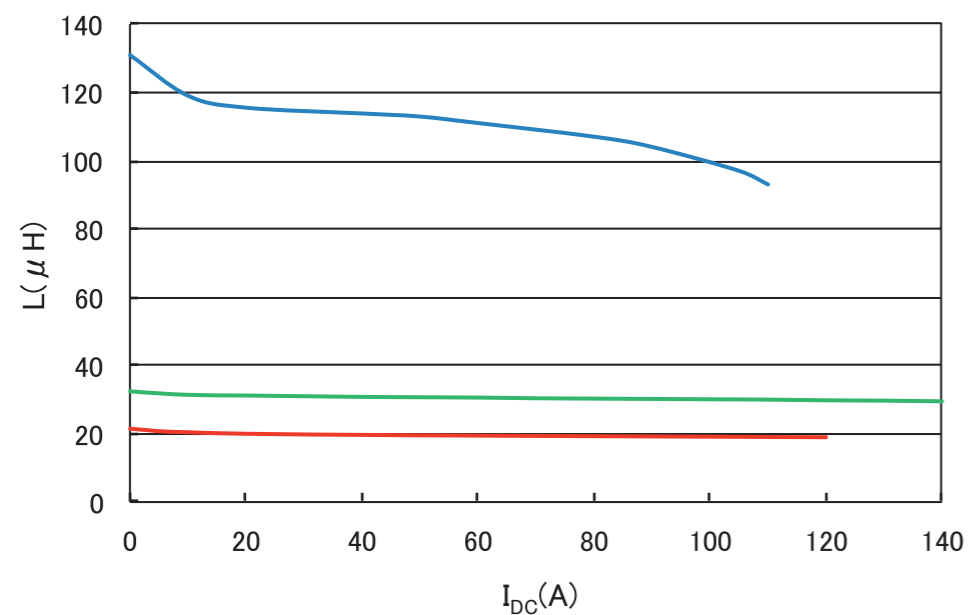
アモルファスコアを使用した高周波対応のリアクタです。  
大電流150Aまで対応が可能です。  
インダクタンスが安定しています。  
直流重畳特性が優れています。  
コアロスも小さいので高周波でも低い損失を示します。  
各種カスタム仕様に対応します。

### AI



Model	A	B (Max)	C	D	E
AI1625	70.0	80.0	60.0	58.0	48.0
AI3230	90.0	100.0	65.0	65.0	52.0
AI8040	98.0	120.0	70.0	85.0	55.0

Direct current superposed characteristics



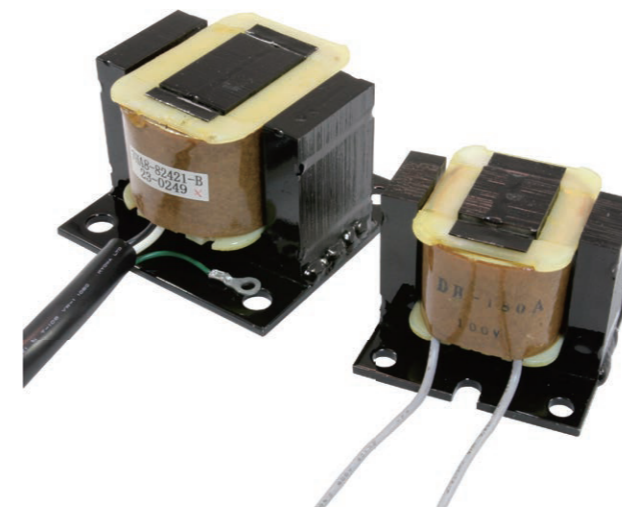
Specifications are subject to change for improvement without notice.

# MAGNET COILS

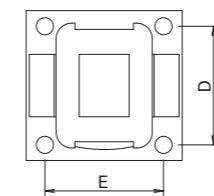
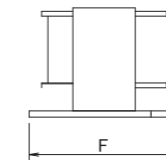
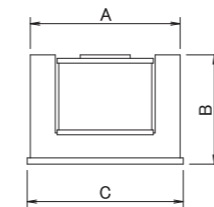
## Features

- Magnet coil for a parts feeder.
- Available to various size.
- Available to customize specification.
- Possible to cope with an order of parts feeder.

パーツフィーダー用マグネットコイルです。  
様々なサイズを用意しています。  
各種カスタム仕様にも対応しています。  
パーツフィーダーのご注文も承ります。



Model	A	B	C	D	E	F
DH-5	48	36	50	38	38	48
DH-150	66	51	66	50	50	64
DH-230	79	56	85	65	65	85
DH-300	111	77.5	110	56	82	80
DH-400	111	77.5	110	80	82	100
DH-450	128	89	128	80	82	100
DH-500	146	98	166	85	135	119
DH-600	156	124	176	110	150	138



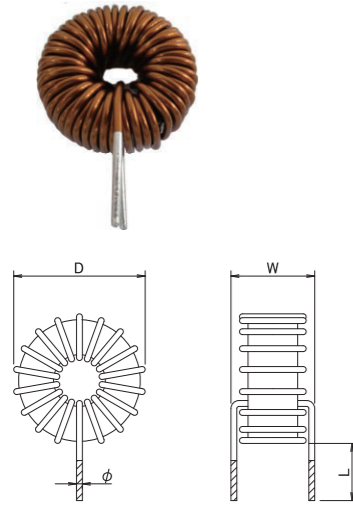
Specifications are subject to change for improvement without notice.

# SMOOTHING / BOOSTER CHOKE COILS LINE FILTER

• Suitable for smoothing coil, booster coil and PFC coil.

- スイッチング電源の平滑用、昇圧用
- PFC用

Sendust



Model	Rated current	Inductance L(μH)	Dimension(mm)			
	(A)		D	W	L	φ
RPS-T08A-01151	1	150	17	10	20	0.5
RPS-T10A-01431	1	430	22	12	20	0.5
RPS-T12A-01721	1	720	26	13	20	0.5
RPS-T08A-02500	2	50	19	12	20	0.7
RPS-T10A-02121	2	120	22	12	20	0.7
RPS-T12A-02281	2	280	26	14	20	0.7
RPS-T08A-03230	3	23	19	12	20	0.8
RPS-T10A-03700	3	70	23	13	20	0.8
RPS-T12A-03900	3	90	26	14	20	0.8
RPS-T15A-03241	3	240	33	17	20	0.8
RPS-T20A-03431	3	430	40	18	20	0.8
RPS-T10A-05280	5	28	24	13	20	0.8
RPS-T12A-05500	5	50	28	13	20	1
RPS-T15A-05131	5	130	34	18	20	1
RPS-T20A-05231	5	260	42	20	20	1
RPS-T15A-10330	10	33	37	19	20	1
RPS-T20A-10720	10	72	42	22	20	1.6
RPS-T20A-20130	20	13	42	21	20	1.6x2

High flux

Model	Rated current	Inductance L(μH)	Dimension(mm)			
	(A)		D	W	L	φ
RPH-T08A-01181	1	180	17	10	20	0.5
RPH-T10A-01551	1	550	22	12	20	0.5
RPH-T12A-01891	1	890	26	13	20	0.5
RPH-T08A-02600	2	60	19	12	20	0.7
RPH-T10A-02171	2	170	22	12	20	0.7
RPH-T12A-02411	2	410	26	14	20	0.7
RPH-T08A-03270	3	27	19	12	20	0.8
RPH-T10A-03101	3	100	23	13	20	0.8
RPH-T12A-03111	3	110	26	14	20	0.8
RPH-T15A-03281	3	280	33	17	20	0.8
RPH-T20A-03591	3	590	40	18	20	0.8
RPH-T10A-05400	5	40	22	15	20	1
RPH-T12A-05700	5	70	28	13	20	1
RPH-T15A-05171	5	170	34	18	20	1
RPH-T20A-05411	5	410	42	20	20	1
RPH-T15A-10420	10	42	33	21	20	1.0x2
RPH-T20A-10121	10	120	40	19	20	1.6
RPH-T20A-20170	20	17	41	19	20	1.6x2

Fe-Si

Model	Rated current	Inductance L(μH)	Dimension(mm)			
	(A)		D	W	L	φ
RPP-T15A-03371	3	370	33	18	20	0.8
RPP-T14A-05271	5	270	30	17	20	1
RPP-T14B-06201	6	200	31	16	20	1.0x2
RPP-T15A-07800	7	80	33	19	20	1.4
RPP-T15A-08261	8	260	33	18	20	1
RPP-T15A-10131	10	135	35	22	20	1.0x2
RPP-T15A-15500	15	50	33	19	20	1.5
RPP-T15E-20220	20	22	34	20	20	1.8

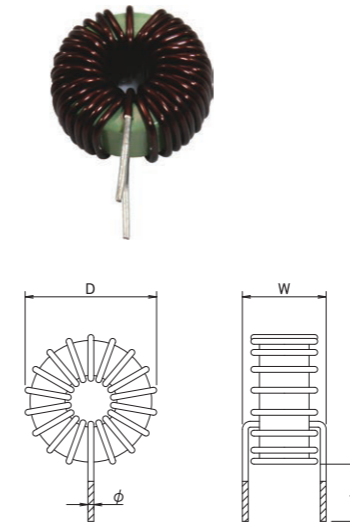
Specifications are subject to change for improvement without notice.

# NORMAL MODE CHOKE COILS LINE FILTER

## Features

- Able to prevent noise of SW power supply.
- Able to remove pulse noise.

- スイッチング電源のノイズ防止
- パルス性ノイズ除去



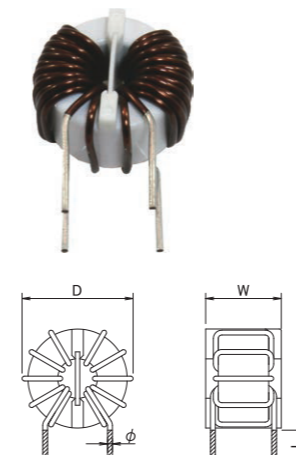
Model	Rated current	Inductance L(μH)	Dimension(mm)			
	(A)		D	W	L	φ
RPM-T03A-05130	5	24	9.5	15	20	0.85
RPM-T10B-03201	3	520	14	9	20	0.7
RPM-T10D-04101	3.8	30	14	9	20	0.8
RPM-T12B-10101	10	100	23	10.5	20	1.5
RPM-T15A-10720	10	72	34	23	20	1.8
RPM-T15B-05171	5	920	34	19.5	20	1
RPM-T14D-15800	15	80	32	16	20	1.5
RPM-T20C-20200	20	91	43	24	20	1.6x2
RPB-T05-25	4	40	15	9.5	20	0.7
RPB-T05-30	3	58	14.5	9	20	0.6
RPB-T05-35	3	78	14.5	9	20	0.6
RPB-T08S-40	4	105	19.5	10.5	20	0.75
RPB-T08S-50	3	165	19.5	10.5	20	0.75
RPB-T08S-60	2	280	18	10	20	0.7
RPB-T08D-40	2	125	18	12	20	0.6
RPB-T10-40	5	100	23	12	20	1
RPB-T12-40	6	100	30	16	20	1.2

# COMMON MODE CHOKE COILS LINE FILTER

## Features

- Suitable for line filter for SW power supply.
- Suitable for measures against common-mode noise of electronic device.
- Suitable for measures against radiation noise of SW power supply.

- スイッチング電源のラインフィルター
- 各種電子機器のコモンモードノイズ対策
- スイッチング電源の輻射ノイズ対策



Model	Rated current	Inductance L(mH)	Dimension(mm)			
	(A)		D	W	L	φ
LF13-10-01153	1	15	17	13	20	0.35
LF19-10-05502	5	5	26	20	20	0.75
LF19-10-10102	10	1	27	21	20	1.1
LF25-05-05103	5	10	33	22	20	1.5
LF25-10-20102	20	1	38	28	20	1.8
LF31-10-20202	20	2	44	30	20	2
LF38-07-15602	15	6	47	27	20	1.6
LF47-07-20133	20	13	59	34	20	2

Specifications are subject to change for improvement without notice.